

HAPPY BIRTHDAY TO WIN BOSTOCK

Win just turned 103. *Is Win our eldest resident?*
Rev'd Margreet asked Win about living in Littlemore...*Did you grow up in Littlemore?*

No, I spent my childhood in Silver Road, off Howard Street. I moved to Littlemore when I got married to Ron - I was 21. We lived with Ron's parents in 1 Chapel Lane during the war and then lived for about 20 years in our own house in 5 Chapel Lane. We moved to Alice Smith Square in 1965. I was baptised and married in St Mary and St John in the Cowley Road, but I started going to Littlemore Church when I was courting Ron and I've been to the church ever since. I now come to Monday morning Coffee and Cake, I like going to that.

I think that you were the first resident in your current house.

Yes, and there aren't many people who are still living here from the beginning of our time. We used to go for long walks through the fields, past the duck pond. None of the roads like St Nicholas Road, Minchery Road, Grange Road existed, that was all fields. I remember the fair we used have in the village.

Where did you work when you were younger?

I worked at the Co-op in the office in the Cowley Road, there was an arcade there, with all sorts of shops. I had to do the bookkeeping upstairs. People used to book out things and have them on approval. So you could take out a coat if it was booked, take it home and if you didn't like it then you could bring it back. They also used to do shoe repairs - half a crown it used to be, sole and heel.

How you manage to be 103?

Just keep going! You don't give up. Just keep going.

FROM THE VILLAGE HALL

It was lovely to see so many young children and their parents at this year's Annual Litter Pick. *(See back page!)* We happily catered for about 100! It would be great to see you all again at another of the monthly Afternoon Teas which we run on the first Saturday each month. The next is 2.30-4.30pm on 1 April: it will host our Spring Fair too. We have space for a couple of stalls, at only £5 each. If you would like to run a stall, please contact me: saroj.patel-hall@hotmail.com. Saroj Patel-Hall

EASTER CHURCH SERVICES

❖ Blessed Dominic Barberi RC Parish Church

- Easter Vigil Mass: Saturday 8 April: 8pm
- Easter Day Mass: Sunday 9 April: 11am

❖ St Mary and St Nicholas Church

- Palm Sunday Service: Sun 2 April, 10.30am: starts with an open-air service on the Village Green: we will process with a real donkey through Littlemore, to the Church.
- Maundy Thursday Service: Thurs 6 April, 7.30pm, at Church. A simple Passover meal followed by a service & vigil.
- Good Friday Service: Friday 7 April, 2-3pm, at Church.
- Easter Sunday Service: Sunday 9 April, 10am, at Church
- Easter Egg Hunt: Sunday 9 April, 3pm, at Church: open to all.

For all **regular** events, please see the What's On Pages in the longer, electronic issue of LITTLEMORE LOCAL.



ERRATUM: ISSUE 449

The Scams info was sent in by Cheryl Harrison at Trading Standards, not Mandy Massam, Age UK.

NEW: LITTLEMORE BROWNIES

Brownies offers a range of activities for girls aged 7-10 (see: www.girlguiding.org.uk/what-we-do/brownies). With a view to starting a regular, fortnightly group, we hope to run a taster session in April at Littlemore Village Hall. For information about the event, or to express interest please email: brownieslittlemorewendy@gmail.com.

Wendy Lumley

DATES FOR YOUR DIARY

Tea at the Village Hall: 2.30 to 4.30pm: first Saturday in the month. *1 April: Tea and Spring Fair with stalls selling homemade cakes, handmade chocolate Easter eggs, cards, pottery, & jewellery. *6 May: Coronation Tea.

UKCF Action Holiday Stunt Camps at the Oxford Academy: Easter: 3-6 April, 14-18 Aug, 18-22 Dec: Book online at UKCF Academy: <https://www.ukcfaction.co.uk>.

Royal British Legion Easter Disco with Domino Disco: Sat 8 April: 7pm: with Raffle, & Prizes for best Boy & Girl U12, and Best Adult Easter Bonnet. Tickets £3 from the Club.

Exhibition of Drawing and Dance: *Drawin' Dancin' Littlemore:* Mon 17 April- Sun 7 May, St Mary & St Nicholas Church: ends with a social gathering & talk on Sunday 7 May at 6 pm.

Redbridge 'Tip' closed: Monday 17 & Tuesday 18 April.

Local History Society Meetings: *April 19: Radley Manor: 1000 years of history, talk by Richard Dudding *May 17: Littlemore, my life & rugby, a journey! Talk by teacher and rugby legend, Lynn Evans. Both 7pm for 7.30 at the Community Centre.

Mini-first Aid Course: Thursday 20 April: 7-9pm at Littlemore Village Hall. Book at Watford.minifirstaid.co.uk.

Concert at S Mary & St Nicholas Church: 29 April: 4pm or 7pm: Dido & Aeneas, an Entertainment by Henry Purcell: presented by Oxford Youth Choirs: suggested donation £10.

Cry Me A River: Sunday 30 April, 6pm, St Mary & St Nicholas Church. An evening of dance, and musical lamentation.

Community Coronation Cream Tea and Games at Emmanuel Christian School: from 3.15 to 5pm on Friday 5 May.

Sandford on Thames WI: Bring Your Own Picnic in the Park: Sun 7 May from 2pm: Sandford on Thames Recreation Ground. Come by yourself and join us, or come with family and friends.

Blessed Dominic Barberi Church Summer Fête: 12-3pm on Sat 17 June at the church hall (Cowley Road Littlemore). There will be lots of stalls including cakes, tombolas, books, toys, a grand raffle, and a BBQ on the patio. Everyone is welcome!

Littlemore Rugby Club Fun Day: BH Monday 27 August: it'll be Bigger and Better this year, so put the date in your diary, & follow our fb page - [Littlemore RFC - Littlemore Rugby Club](#).

WANT TO RUN A CORONATION STREET PARTY?

Apply for a road closure here: https://www.oxford.gov.uk/info/20146/streets/72/apply_to_hold_a_street_party. The road closure fee will be waived.

CHANGES AHEAD FOR LANDLINE PHONE USERS

Copper telephone wires are being replaced by more modern technology which will be provided through a broadband (Internet) connection. After the switchover in 2025/26, you will still be able to use your handset, and your existing phone number, but you may need an adapter to plug your existing landline telephone into your broadband router. If you don't already have the internet, you will need a 'line only' broadband connection. Your telephone provider should help you with this.

Special technologies, like Emergency Call Pendants may need adapting. Contact your telephone provider as soon as possible to sort this out.

One disadvantage of the new system will be that your phone will not work during a power cut. So you are advised to have a mobile phone, too, or a Battery Backup System. See more about this on page 17.

YOU'LL SOON NEED PHOTO ID TO VOTE

From 4 May 2023 you must take photo ID to polling stations when you vote. Accepted forms of ID include:

- a UK, European Economic Area or Commonwealth passport **or** drivers' licence
- some travel passes, such as an older person's bus pass.

You may use an expired ID if you are recognisable from the photo. If you don't have one of the accepted forms of ID, or if you no longer look like the person in your ID, or if your name has changed, you can apply for free ID, known as a Voter Authority Certificate. You will need the address where you are registered to vote, a recent photo of yourself, and your National Insurance Number. If you don't have access to the internet & would like a paper application form, either drop into the Town Hall, or ring 01865 252 987: the elections team will send one out. *Find more info at electoralcommission.org.uk/voterID.*

IS THERE ANY EMPTY HOME NEAR YOU?

Oxford city has a severe housing shortage due to a growing population, and limited opportunity to develop land for additional housing. For this reason the Council is committed to encouraging owners to bring unoccupied dwellings back into use. An empty home is a flat, a dwelling house, or a house in multiple occupation, which is privately owned and has been unoccupied for more than six months. If you know of an empty property, please inform the council's Empty Property Officer, Melanie Mutch (at Town Hall, St Aldate's, OX1 1BX) tel: 01865 252 280, email: mmutch@oxford.gov.uk. There's no need to give your name if you contact the EPO. You can also report online at www.oxford.gov.uk/xfp/form/63.

SHORT CLOSURE OF REDBRIDGE RECYCLING CENTRE

During March and April, Oxfordshire County Council will be shutting each of its centres for 2 days to allow deep cleaning and essential maintenance work.

Redbridge will be closed Monday 17 & Tuesday 18 April.

NB: From 1 April 2023, some DIY waste charges will increase:

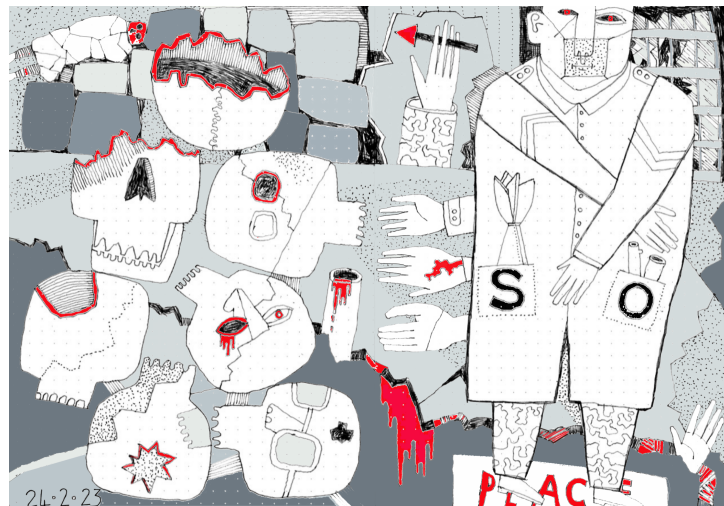
- All charges at 1.50 will increase to £2.
- Tyres at £5 will increase to £6.
- Plasterboard bag at £2.50 will increase to £3.50.
- Plasterboard sheet at £10 will stay at £10.

ELECTRIC VEHICLE (EV) CHARGING

Phase 2 of Go Ultra Low Oxford will start soon: it will provide extra EV charging points for those without off-street parking. The charge points will be installed by early 2024. All those who have already expressed interest will be considered. To add your name go to: www.goultralowoxford.org/homepage/18/register_your_interest_in_on-street_charging.

ON PAINTING

For some time LITTLEMORE LOCAL has used drawings of mine to accompany John Wilde's poems. These drawings arise from a process I call doodling. I fill small sketchbooks with improvised images: daft, illogical scenes peopled by things and characters that seem to mean something and are open to many interpretations. In difficult times like CoViD lockdowns and more recently the war in Ukraine these drawings maybe express how I feel. The Special Operation drawing below came on the anniversary of the start of Putin's dreadful attack on Ukraine.



But to be out of doors, away from the urban environment, is good for health and happiness, and since 2020 what has kept me more or less sane has been regular outings to paint in the landscape, away from the worries of the world. Mostly I paint in Wytham Woods or along the Thames, but I've also been away to the Lake District. This painting was done on a cold day last spring in Martindale. The world can be extraordinary and beautiful despite the dreadful things we are capable of.



Andrew Walton

This time, John Wilde's poem is in the electronic issue. It's illustrated with a drawing by Tim Steward.

LITTLEMORE NEIGHBOURHOOD WATCH (NW)

Please join NW to fight crime in Littlemore. All you are asked to do is report crime to the NW Coordinator who will share information with the local PCSO so as to protect yourself and others. NW Coordinators bring people together and are looking out for each other. Ideally, they are local residents, as in Bampton Close, David Nicholls Close, & Kempson Crescent. For all other roads in Littlemore I will be your NW Coordinator until residents apply to form schemes. Join as a member on <https://www.ourwatch.org.uk/joinNW> or please contact me: maggiejlewis@yahoo.co.uk. Maggie Lewis, Vice Chair TV NW

SCAM WARNING FOR ONLINE SECOND-HAND SHOPPERS

If you use re-sale sites to buy pre-loved items online, pay attention to the payment method. Online scammers might put pressure on you to pay through a bank transfer. Please always make your payment through the website itself.

FREE HEALTHY LIFESTYLE PROGRAMME FOR FAMILIES

Gloji Energy is a free 12-week programme for children & their parents/carers, starting April. It's for children aged 4-12 years old who have a BMI over the 91st Centile, but who are not diabetic. It offers group and/or 1:1 sessions, depending on the needs of each family. Our local groups will be at Florence Park and in BB Leys. To find out more call 01865 590 292 or see: www.achieveoxfordshire.org.uk/services/gloji-energy.

LOW COST AND FREE ACTIVITIES FOR CHILDREN

YouMove is a scheme that provides a range of low cost and free activities for Oxfordshire families who have children on benefit-related free school meals. It's quick and easy to sign up. See: www.getoxfordshireactive.org/you-move.

See page 16 in the online issue of LITTLEMORE LOCAL for info about Easter activities in the City Centre.

WANT TO STOP SMOKING?

You are four times more likely to be successful with the free tailored support offered by Stop For Life Oxon. Call 0800 122 3790 or Text STOPOXON to 60777. See: www.stopforlifeoxon.org/decide-to-quit.

CALLING ALL ARTISTS

John Henry Newman Academy is looking for volunteers with expertise in the arts to run art sessions for different year groups, and after school art clubs. If you are interested, please contact the school office: office2000@jhnacademy.co.uk.

Photo: collage of The Mad Hatter, by a Year 6 student.



MORE MUSHROOMS

In the last issue, the BBOWT Wildlife Page focused on mushrooms. By coincidence mushrooms were the focus of the Oxfordshire Woodturners, who meet in our Village Hall. They sent in pictures of their work. Newcomers are very welcome, no matter what level of experience: entry is free for your first 2 sessions. Contact owc_secretary@yahoo.com or see www.oxonwoodturners.com.



HOW LITTLEMORE LOCAL REACHES YOUR DOOR

There has been an electronic version of LITTLEMORE LOCAL for 8 years now (you can receive it by email if you contact the editor) but the Parish Council remains committed both to producing a print issue, and to delivering it free of charge to every home. The print issue contains local news, Planning Matters and Parish Council messages. The hope is to build a sense of community in a rather fragmented parish, and to reach those who don't use the internet.

Each issue come back from the printer 9 or 10 days before the issue date. 3500 copies are sorted into bundles by Cllr Stewart. Within a day or two the bundles are delivered to the homes of volunteers who deliver them to your door. LPC relies on this team of volunteers, many of whom have helped for years. But Littlemore is growing. We have several new estates. Please consider joining the team, especially if you live in or near Armstrong Road or St Nicholas Place.

Please contact editor@littlemoreparishcouncil.gov.uk.

PLANNING MATTERS

There seem to be a lot of applications for Change of use from dwelling house to House of Multiple Occupancy (HMO). They are being decided very quickly so LITTLEMORE LOCAL can't keep you abreast of all of them.

4 Newman Road OX4 3UJ, (22/02874/FUL) has been agreed.

If they concern you, log into www.oxford.gov.uk/downloads/download/619/planning_applications_weekly_list. It's updated every Tuesday. If you register, you can track applications that interest you, and you will be notified of developments by email.

NEW APPLICATIONS

Change of use from dwelling house to House of Multiple Occupancy (HMO)

• 40A Cowley Road Littlemore, OX4 4LD. 23/00296/FUL

• 38A Cowley Road Littlemore OX4 4LD. 23/00291/FUL

These are flats above 2 shops. Littlemore Parish Council (LPC) neither support, nor object to the conversions. However, they feel that the plans do not provide the community living spaces inside and outside that should be available for this number of occupied bedrooms.

• 121 Herschel Crescent, OX4 3TX. 23/00351/FUL. Plans also include alterations to front and rear elevations. LPC had not commented when this news sheet went to press.

Conversion of existing garage to make a larger HMO.

• 12 Gwyneth Road OX4 4QH. 23/00294/FUL.

LPC neither support nor object to this conversion, but they feel that converting a house from 3 to 7 bedrooms is a significant change which may lead to issues with traffic & parking.

Erection of a single storey rear extension to provide office space and classrooms.

• Air Cadet Hut Sandy Lane West OX4 6LD. 22/03068/FUL.

It's a measure of the success of this local youth group that they wish to enlarge their premises.

Demolition and re-location of existing cycle shelter. Erection of a single storey building to be used as a Community Hub

• John Henry Newman Academy, OX4 4LS. 23/00053/FUL.

Littlemore Parish Council support this development and the benefits that it will bring to the community.

Redevelopment of Blackbird Leys

• Land At Blackbird Leys Road and Knights Road, BBL.

23/00405/OUTFUL. Catalyst and its development partner Oxford City Council have submitted plans to build affordable homes, retail space, & new community facilities including a new Community Centre and community square.

OPPOSITION TO PROPOSED HIF 1 road

Oxford Roads Action Alliance is opposing the proposed new HIF 1 road from the A34 at Milton to the Oxford-Reading road near Nuneham Courtney (see issue 445 of LITTLEMORE LOCAL). ORAA argues that the £300M+ project is in opposition to Ox County Council's Local Transport & Connectivity Plan and their Climate Plan. It will result in more traffic reaching Heyford Hill Roundabout via the A4074, and possibly more traffic cutting through Littlemore. There is more information on the ORAA website: <https://oraa.org.uk>.

LOOK IN THE LONGER ELECTRONIC ISSUE for ...

*What's On in Littlemore *News from St John Fisher and Emanuel Christian Schools *info about local artists taking part in Artweeks 2023 *the BBOWT Wildlife page *the Local History Society page *a Poetry page *more about the changes to landlines *advice from Recycling about reducing food waste *up to date Parish Council contact info. Receive it by email from editor@littlemoreparishcouncil.gov.uk.

ST JOHN FISHER CATHOLIC PRIMARY SCHOOL

St John Fisher have had an extremely busy term.

- Classes have explored a variety of topics, from Ancient Greece to Space Exploration.
- An amazing World Book Day saw children and teachers across the school dress up, and share & explore their favourite stories.
- We have seen visits from *Science Oxford* and from *Zoo-Lab*. *Science Oxford* brought their Planetarium Show, to help us explore earth and space. *Zoo-Lab* offered encounters with exotic animals, for our Yr 1 pupils.
- We have seen our children compete in a wide range of sports and have received expert coaching in hockey from *Oxford Hockey Club*, and in cricket from *Chance to Shine*.



- Our Y5/6 boys football team have won the ESFA Oxfordshire Schools Cup and are going to Bristol to represent the county.



- We continue to build our links with both Radley College and Headington schools: our children visit their campuses for music, and for extra-curricula PE lessons.



- *Playmakers Project* have been working in our school, and this has enabled one of our amazing writers in Y6 to see her play performed at The Oxford Playhouse.

- Of course, we have also had regular visits from both Fr Harry and Fr Ziggy to help our children grow in their faith throughout Lent.



We have in-year places available across both Key Stages in our diverse school, and are regularly open for visits. If you are an interested parent, just get in touch with the school office. All are welcome!

submitted by Mr Higgins

Photos © SJF School
The Science Oxford Planetarium
Handling some exotic wigglers
Hockey & Football Teams
Music lessons
photo permissions received

EMMANUEL CHRISTIAN SCHOOL

At Emmanuel Christian School we are learning a lot about horses and the sport of kings.

We have acquired our own (rocking) horse, Stella, who brings a lot of joy to our children in Early Years.

We've visited Riding for the Disabled in Abingdon, and a friend of the school who is a farrier shoed one of the horses and explained the different steps to the children who were really captivated.

We also set up our own 'Grand National' and children competed for the fastest time around the course. We applied a handicap to make the race fair. You can see us setting the 'Canal Turn' in the picture below.

We are marking the Coronation with a Community Coronation Cream Tea from 3.15 to 5pm on Friday 5 May. Members of the Littlemore community are welcome to join us as we enjoy tea, scones, and a range of different games. *Lizzy Nesbitt*



Photos © ECSI
Stella and her rider
Our farrier friend
Setting up The Canal Turn
photo permissions received



LITTLEMORE LOCAL HISTORY SOCIETY STREET NAMES PROJECT

LLHS members working on our Littlemore Street Names Project recently met for a walk round part of Minchery Farm Estate. We noted street names, and finished with tea and conversation at the Village Hall. Here are some of our findings.

Denny Gardens

This Council-funded housing development opened in July 2016. It was named after the late Littlemore parish councillor and ardent Oxford United Football Club supporter, Les Denny.

Faber Close

Tony Euade has identified a Fr William Frederick Faber (1814–1863), after whom the road may be named. Faber was a noted hymn writer who converted from Anglicanism to Catholicism in 1845, and then become a Catholic priest. He was the uncle of the founder of Faber publishing house. He has a connection to Oxford, for he was a student here in the 1830s and was exposed to the Oxford Movement, and the Anglo-Catholic preaching of John Henry Newman.

Neill Place (off Armstrong Rd)

Thank you to Barbara Bumpass for her posting on LLHS fb site (it is open to all). She has told us that Neill Place is named after her father, Bill, who worked at Littlemore Hospital from 1964. They moved from Northern Ireland to live in Heyford Hill Lane, which was then full of housing for hospital workers.

Photos:

Below left: Minchery Lodge with Mrs. Minnie Mercer. Minchery Lodge stood on what is now St. Nicholas Road between The Grange and a narrow lane (in photo) with the church wall on the right. The lane lead to a woodyard which everyone in Littlemore called 'The Local Board'. Italian Prisoners of War worked there. Many of them remained after the war.

Middle: gateway to what was the Grange, now Barberi Close.

Top right: Italian Prisoners of War working in the woodyard behind where Dominic Barberi is now.

Bottom right: American soldier and his Italian POW cousin in the woodyard, 1944 (Photos donated by Pat Fagin.)

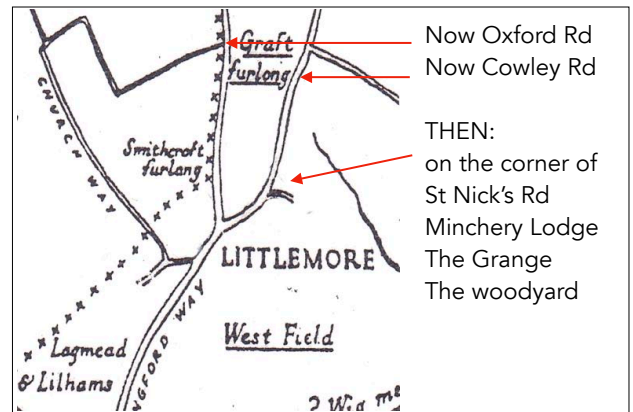
Julia Brocklesby

Carpenter Close

Tony Euade has identified two possible Carpenters this road may be named after, but we don't know. If you can help please contact us at history.littlemore@gmail.com.

- Harry James Carpenter (1901-1993) an English bishop and theologian. He was warden of Keble College, Oxford and then Bishop of Oxford from 1955-70. The Minchery estate was built in the 50s and 60s: generally the names of living people are not used, so the road may not be named after him. Bishop Carpenter had a son: Humphrey Carpenter, Oxford-based biographer, broadcaster and writer, known for his biographies of Tolkien, and the Inklings.
- Edward Carpenter (1844-1929) was a near contemporary of John Henry Newman, but he had little apparent connection to Littlemore. He was a hugely influential socialist, critic, writer, poet, thinker, vegetarian, and mystic. He was ordained as a curate in the Church of England, but was voluntarily released to become involved in the University Extension Movement to widen access for the working class to education.

However it is possible that the street was named Carpenter Close to commemorate the workers in the extensive wood yard that occupied the site active in WWI and WW2.



Oxfordshire Artweeks is the UK's oldest & largest open studios event. It's a celebration of the visual arts which takes place each May in hundreds of venues across the county. See them by location on the map at www.artweeks.org/festival/map.

Group exhibitions are always good value.

LITTLEMORE ARTISTS WHO ARE TAKING PART

Claire Drinkwater, Printmaker,

exhibiting at Venue 70:

All Saints Church, North Moreton OX11 9AT.

Open: 6-14 May,
10am-6pm (Sun 11-5pm).

This year I'll be joining five other artists, to put on a wide-ranging display which will include original prints, paintings, textiles, ceramics, woodturning and rocking horses. That should offer something for everyone!



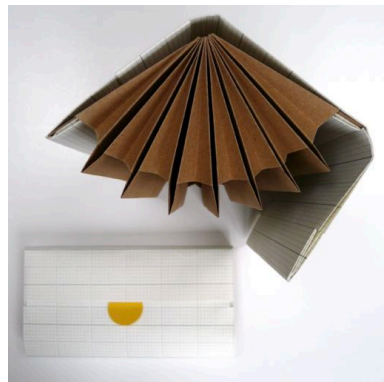
I am principally a printmaker, a demanding and inspiring discipline which I have now been practising for thirty years. I work mostly with etching and collagraph, sometimes combining the two in one image. I draw inspiration from my surroundings, especially the natural world. In addition to printmaking, I enjoy drawing and painting, working mostly in mixed media including soft pastel, oil pastel, watercolour, and collage. My large mixed media paintings allow me to indulge my love of colour to the full! I also hope to have work included in the exhibition at the Oxford Printmakers Co-operative workshop in Tyndale Road, East Oxford, where I am a member.

Judith Godsland: Sketch Books and Book Structures

Exhibiting with 11 other members of Oxfordshire Craft Guild (Ceramics, Jewellery, Pottery, Sculpture, Textiles, Book Structures.)

Venue 502: Sawmill Yard, Wytham Woods, OX2 8QQ.

Open: 11am-5pm: Fri 26 to Bank Holiday Mon 29 May.



I've always loved paper, and have experimented with paper sculpture, paper folding and paper making.

I like drawing and printmaking, and make (and sell) my own cards using my own designs, but I fear that my artistic efforts seldom live up to the promise of the blank page, so my main focus is bookbinding. I make books from scratch, especially sketchbooks, and 'book structures': the pictures shows a keepsake book.

Recently, I started making tiny, hand-cut, single sheet vertical pop-up cards as a way of using up off-cuts from book binding projects. Each card is 2.125 inches square, and they are mostly animals and birds. The menagerie is growing: there are about 40 designs so far, plus the 26 letters of the alphabet.

EXHIBITIONS CLOSE TO LITTLEMORE

Residents of Brookfield Care Home, Greater Leys

Mixed Media, Mosaics, Painting, Photography, Printmaking at Venue 399: Brookfield Care Home,

Little Burry, Greater Leys, OX4 7UY.

Facilities: Parking: Accessible for Wheelchairs.

Open: 11am-1pm ONLY: on Tuesdays and Wednesdays 16 & 17, and 23 & 24 May.

MHA Brookfield is a nursing and dementia care home situated in Greater Leys. We encourage our residents to take part in a wide variety of art and crafts to stimulate and engage them. Local artist Jane Lees, Victoria Davidson, and Sally May of the Activities team work with the residents to bring out their latent talent.



We are also exhibiting photography from our renowned Brookfield calendar, and our seaside mural.

Boxed: Becky Paton, Amanda Bond and Ian Roxburgh

Mosaics, New Media, Painting: at Venue 400:

17 Rock Farm Lane, Sandford-on-Thames, OX4 4YL.

Facilities: Accessible for Wheelchairs, Refreshments, Parking.

Open: 11am-6pm Saturdays & Sundays May 20/21 and 27/28

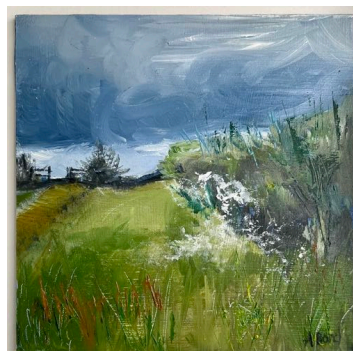
Boxed are three contemporary artists working in a wide range of media with a shared vision to creatively fill a 23cm frame... with paint, mosaic, twine, metal and wood.

Photos: clockwise:

Ian Roxburgh: box artist & painter: *Damp Play Ending*

Becky Paton: mosaicist: *Bullfinch*

Amanda Bond: painter & textile designer: *Field*



THE DAY WE MADE OXFORD

Ogden my finance director
was practising Mussorgsky
on a Steinway by the Thames.

My desk was in a green, green field,
flat, bisected by the river.
Idyllic, really.

It would soon be time for lunch - how nice.

Champagne was cooling at the water's edge.
An ox attracted by the Steinway's tone
was crossing at a nearby ford.

Just then I had a phone call from New York.
From Brad. He asked about the business.
I tapped the PC's keys
and on the green, green screen
the signs were good.
They're programmed to be good, thank God.

'The signs are good,' I said.

'I'm glad. But what we need is something new!'
The ox applauded and Ogdon played a short encore,
a polonaise I think it was.
I called Wren and dreamed of spires.

Together
we built libraries and colleges,
and shops
all afternoon -
and drank champagne.

Wren was pleased and so was Brad.
I was too.
But I was sad to lose the field.

John Wilde



Dreaming Spires: *Tim Steward*

IRENA AND OTTO

Always
beautiful,
coming
down
effortlessly
from
great
height,
Irena
jumped,
kicking
lightly -
mighty
nimble.

Otto,
partly
questioning,
ruminated -
surprised -
tentatively
understanding
vehement
womanhood....
Xena...
yearning...
zeal...

Judith Godsland

This is an Alphabet Acrostic:
try to write one yourself, and please send it in!

BBOWT WILDLIFE PAGE: BBOWT is a wildlife charity based in Littlemore

The Wildlife Trusts, led by Berkshire, Buckinghamshire & Oxfordshire Wildlife Trust (BBOWT) and its ecological consultancy Future Nature WTC have sponsored a show garden at the Royal Horticultural Society's Spring Festival at Malvern.

It's called The Wilder Spaces garden, and it takes wildlife-friendly gardening to a new level. The Wildlife Trusts' team will be working with experts from Oxford Garden Design, to demonstrate how wildlife habitats can be designed into the structure of a garden, using building waste, reclaimed material and untreated timbers. The aim of the garden is to inspire visitors to think differently about how a garden might be designed for people and for wildlife, and to show how we can all nurture nature, no matter what size or style our garden.

Oxford Garden Design, with Jamie Langlands as lead designer, is returning to the RHS Malvern Spring Festival following its successful 2022 show garden. Jamie has designed a garden that's both beautiful to behold, and beneficial to the natural world. With biodiversity designed into the garden, hopes of winning a prestigious RHS medal are high.

The garden will include a range of nature and climate positive features, including:

- A variety of wildlife habitats – including grassland, wetland & deadwood.
- Pollinator- and larva- friendly planting. Carefully chosen cultivated plants will provide pollen and nectar for insects, and will grow alongside often un-sung native plants that feed the larvae of butterflies, moths, and other invertebrates. Key species will include hawthorn, ivy, nettles, blackthorn and cow parsley.
- A watercourse that meanders through the plot, over a waterfall towards a central pond, and a section of bog planting.
- A compost channel, hoverfly stumpery, and solitary bee columns
- Recycled materials – timber, steel, building aggregate. Materials used in the building of the garden have been sponsored by Grundon Waste Management Ltd.
- The team has also worked with Charlie Luxton Design to provide a pavilion, constructed from reclaimed steel joists and grating, which will be topped with a living roof.

Estelle Bailey, BBOWT's Chief Executive, said:

"Private gardens make up a larger area than all of Britain's nature reserves combined – they can provide a mosaic of mini-habitats that support a diverse range of species, so they are key to helping create more nature everywhere. RHS Malvern Spring Festival will be a great opportunity to show people everywhere what they can achieve in their own gardens."



Once the RHS Malvern Spring Festival is over, the garden will be distributed across various Berkshire, Buckinghamshire & Oxfordshire Wildlife Trust sites and projects. The seating will go to BBOWT's College Lake Visitor Centre near Tring, or to Sutton Courtenay Education Centre's wildlife garden.

The RHS Malvern Spring Festival runs from 11-14 May 2023 at the Three Counties Showground in Malvern, Worcestershire.

For more information and tickets to the show visit: rhs.org.uk/shows-events/malvern-spring-festival

For more about BBOWT, contact info@bbowt.org.uk or see www.bbowt.org.uk.

*Submitted by Pete Hughes
BBOWT
1 Armstrong Rd, Littlemore*

Picture credits:
The Wilder Spaces Garden © BBOWT
Banded demoiselle by Andrew Marshall
Woodpecker by Gillian Day
Buff-tailed bumblebee by Chris Gomersall
Small tortoiseshell butterfly: by Amy Lewis
Stag Beetles by Terry Whittaker

WHAT'S ON

Regular Events: APRIL / MAY '23

Though pandemic restrictions have eased, please contact event organisers for clarification.

KEY: LOCATIONS IN and around LITTLEMORE

ACF	Army Cadet Force Building, OX4 6LD
ATC	Air Cadet Forces Centre, OX4 6LD
BDB	Blessed Dominic Barberi Hall, OX4 4JX
EKH	Edith Kempson Community Hall, OX4 4QB
IBC	Indoor Bowls Club, OX4 6NA
JHN	John Henry Newman Academy, OX4 4LS
LCC	Littlemore Community Centre, OX4 4PL
RHCC	Rose Hill Community Centre
RBL	Royal British Legion Hall, OX4 4LZ
RMHC	Rose Hill Methodist Church: Rose Hill, OX4 4HS
SAC	St Andrew's Church: Sandford, OX4 4XZ
SHQ	Scout HQ, Fairlie Road, OX4 3SW
SNP	Spindleberry Nature Park, OX4 6DW
SVH	Sandford Village Hall, OX4 4YN
SM+SN	St Mary & St Nicholas Church, near OX4 4PB
TOA	The Oxford Academy, OX4 6JZ (except for Rugby Club which is via Northfield Close entrance: OX4 4NH)
VHL	The Village Hall, Littlemore, OX4 4PY

• Acrobatics, Parkour, Aerial & Stunts: UKCF Academy®:

TOA: Parkour park, Tumble track & Stunts: ropes, trapezes, silks, hoops, handstand canes & more. Sundays: *10:30am -6pm: age 7-17 years *6-7pm: 18+ Pre-book only: www.ukcfacademy.co.uk. Booking is also open for 2023 Easter, Summer & Christmas Holiday Workshops. Contact Oliver Ward 03302 233 995

• Advice Centre: serving Rose Hill, Donnington & Littlemore: see separate listing, p 15

• Aerial & Pole Dance (Oxford Aerial Arts): fun & fitness for all: **TOA:** weekday and weekend classes for all levels. Book at aerialartsacademy.co.uk. First class free using code OAA1STFREE. Contact Nicola Ghalmi: 07909 974 256, info@aerialartsacademy.co.uk

• Afternoon Tea at **VHL:** Tea, coffee & delicious home-made cakes, and an opportunity to meet some of your Parish Councillors: first Saturday: 2.30-4.30pm. Next teas are April 1 (+mini Fair), and May 6 (Coronation Tea). Contact Claire Drinkwater 01865 718 580. See fliers pp 13 & 14

• Age UK Workshops: see Friendly Friday at the Library.

• Art & Craft Courses: Oxford Summer School @ **TOA:** yearly: www.oxfordsummerschool.com. Contact Lesley Houghton lesley@oxfordsummerschool.com or Anne Griffiths anne@oxfordsummerschool.com

• Art Exhibitions: **SM&SN:** Regular events showcasing work of local artists. See: www.littlemorechurch.org/exhibitions. If you are interested in exhibiting your work please contact Julian Armitstead, churchwarden@littlemorechurch.org

• Air Cadets: **ATC:** see www.aircadets.tv/2210. 2210 (Cowley) Sqn parade Mon & Wed from 7.30-9.30pm. Please send enquiries to me, Flt Lt O'Riordan, oc.2210@rafac.mod.gov.uk

• **Allotments:** * Thomson Terrace: to join the allotment waiting list email Treasurer Helen Fetzter helenfetzterplus@yahoo.co.uk Chair Gillian Turnbull gillianturnbull@live.com or phone Field Secretary Tom Dyra 07867 931 487 *Minchery Farm (see City Council website) *Elder Stubbs (see City Council Website or Restore website) and *Denny Gardens (see www.odfaa.com/members/contact)

• **Angling Society: Extensive local still, & flowing waters:** It's now the closed season for river fishing, but some fishing is permitted on enclosed still waters and canals: see below for the closed season fixtures. The river season opens June 16, and permits will be available in all local tackle shops and via our website from mid April. Contact Alan Campbell, alancampbell0811@gmail.com, 07789 334 710, www.littlemoreanglingsociety.co.uk

• **Army Cadets: ACF:** If you're 12, in year 8, and are interested in learning news skills, & making news friends, the Army Cadets is for you. We parade on Thursday nights from 7.30 to 9.30pm. See www.armycadets.com/county/oxfordshire-acf/Oxfordshire for more information or contact Colour Serjeant S Turner, Detachment Commander 9882turne@armymail.mod

• **Barberi Club:** a social group whose activities are currently tailored to suit older people, though we'd love to attract younger members: **BDB Church Hall:** Wednesdays 10-12noon: please contact Teresa Prescott: 07749 386 218, teresaprescott71@yahoo.co.uk

• **Bingo:** **RBL** on 1st & 3rd Friday, and **VHL** on 2nd & 4th Friday. If there's a 5th Friday, they will decide at the time. For more info contact Katie Tutty 01865 778 869 or littlemorerbl@gmail.com

• **Bowls (Indoor): IBC:** Sandy Lane West OX4 6NA: see www.oxbowls.co.uk

• **Childcare: Littlemore Preschool: LCC:** M-F 9-12noon: term-times: for pre-school children from 2-4 yrs: to go on our waiting list please drop by when we are open, or contact us for an application form: Manager: Hayley Cox: littlemoreplaygroup@yahoo.co.uk. Phone 01865 396 449 when open

• **Childcare: Little People Nursery: TOA** Northfield Close entrance: 8am to 5.30pm, 48 weeks a year. Manager: Lindsey Hart: 01865 397 972, littlepeepelnursery@peeples.org.uk

• **Childcare: The Old Station Nursery:** Heatley Road, OX4 4GE: **Oxford Science Park:** open all year for children aged 3 months-5 years. Please contact Charlotte Dagg: 01865 777 167 or osp@tosn.co.uk

• **Children's Groups at JHN: term times only.** Stay & Play for 0-5s & parents/carers: Mon & Tues 9-10.15am. Join us for toys, a run around, & fun. No need to have a sibling at the school. For details call Hannah Jamieson on 01865 772 495

• Children's Groups: Growing Minds

◦ **Growing Minds Project: OPEN:** if you live in Littlemore and have a little one born 2018 onwards, do get in touch to find out more about the Growing Minds project & about receiving free books. Email families@peeples.org.uk or call Hayley Hayle on 07864 311 964

◦ **Growing Minds Stay & Play at SM+SN church:** Thursdays 10-11.30am. For further information, please contact Lucy White: lucy@homestartoxford.org.uk or call 0773 438 9799.

- **Growing Minds Peep group:** at the **Peep Cabins: TOA** Northfield Close entrance: Tuesdays 1.30-2.30, for all Littlemore parents/carers with babies under 12 months old. For more information call Hayley Hayle on 07864 311 964, Hayley.hayle@peep.org.uk
- **Children's Groups: Peep Groups:** Please contact families@peep.org.uk or phone Lisse Honeyman on 07780 716 098: see www.peep.org.uk/peep-groups-oxfordshire
- **Peep Outdoor Group: SNP:** Wednesdays 1pm: for toddlers and their parents/carers
- **Singing, stories, & time to talk to practitioners: various locations:** for babies, 1- & 2-yr-olds
- **Children's Groups: Stay & Play:**
 - **Little Chuggers: SHQ:** drop-in indoor & outdoor Stay & Play for children aged 0-4yrs, their parents & carers: find updates on our Facebook page. If you'd like to help: please contact Ruth Lloyd, 07736 831 038, littlechuggers@gmail.com
 - **Stay & Play at the Library** (see Library)
 - **Stay & Play at SM+SN** (see under Growing Minds)
 - **Stay & Play at JHN** (see under Children's Groups at JHN)
- **Churches:** see separate Faith Group listings pp 13 & 14
- **Coffee morning and Sing-along: SM+SN:** Mondays 10-noon: drop in for coffee, cake, conversation & song: contact: contact Eve McWilliam admin@littlemorechurch.org
- **Coffee morning: SM+SN:** Wednesdays 10-noon: drop in for coffee, cake, conversation: contact Eve McWilliam admin@littlemorechurch.org or see www.littlemorechurch.org
- **Community Emergency Food Bank:** separate listing on p 15
- **Conservation Work Parties:** Berks Bucks & Oxford Wildlife Trust. **Based in Littlemore:** we have nature reserves which offer days out, and outdoor opportunities to volunteer. Contact: info@bbowt.org.uk or see www.bbowt.org.uk
- **Crafting for children + carers: see Library**
- **Drop-In for people of all ages: RHMC:** Mondays 2-4.30pm Community Drop in: contact Liz Spain, Community Chaplain: rosehillcommunitychaplain@gmail.com
- **First Aid for Parents & Carers: VHL:** Next session: 7-9pm Thurs 20 April. Multi award-winning Baby & Child classes delivered in a relaxed & comfortable style that gives you the confidence to know what actions to take if faced with a medical emergency. Sessions cover CPR, Choking, Bleeding, Burns, Bumps, Breaks, Febrile seizures & Meningitis awareness. To express interest contact Fran Brooman: fran@minifirstaid.co.uk, or 0796 722 8986. To book, see: watford.minifirstaid.co.uk
- Not confirmed: may not be running: Football Coaching at TOA 3G Dome: offered by Oxford United in the Community
- **Gardening Group: VHL:** The Village Hall gardening group meets Thurs 2-4pm, to maintain & improve the grounds of the Village Hall in Railway Lane. All welcome – no experience needed. If you'd like to join please send an advance email to Claire Drinkwater: c.drinkwater760@btinternet.com
- **Gym: TOA:** weekdays 5pm-10pm, weekends 9am-9pm. We have Cardio machines (Treadmills, Cross trainers, rowing machines & bikes) free weights, & assisted weight machines.

For more see: <https://toaleisure.schoolbookings.co.uk>. To arrange your £15 monthly membership: either pop in at reception during gym opening hours or contact us on toaleisure@theoxfordacademy.org

- **Halls for Hire:** see separate listing p 13
- **Karate:** Thursdays: at **JHN:** *age 4-6yrs Thursdays 3.30-4pm *age 7-14yrs Thursdays 4-5pm. Chris Wilmott, 07880 636 123 or chriswilmott2000@yahoo.com
- **Kendo: TOA:** 2.30-4.30 Saturdays: Japanese samurai 'sword' fighting with bamboo shinai & wood bokken: for boys+girls, men+women age 4yrs to 60+: contact Rowena Dossett: Oxford City Kendo Club 07711 285 730, rowenadossett@aol.com, or see www.oxfordkendo.com
- **Kickboxing:** Oxfordshire Freestyle Kickboxing Academy: **LCC:** *Tuesdays 6:30-8pm & *Fridays 6:30-8pm: for all ages and abilities. Contact Mal McKeon: 0771 345 9337
- **Lacrosse: TOA:** 6.30pm Monday evenings until early May (on May 8 training moves to Botley for the summer: returns to TOA in the autumn): training for men's, women's, boys', & girls' teams. Everyone is welcome, from complete beginners to experienced players. See @ fb: **OXLAX**, and www.oxfordcitylacrosse.co.uk for more info: contact us at oxfordcitylacrosse@hotmail.com
- **Library: Home Library Service: Home Pick Up & Delivery.** Contact Kevin Salway, 01865 810 259: homelibraryservice@oxfordshire.gov.uk
- **Library: Littlemore Public Library: TOA:** Monday 2-5pm | Tuesday 2-5pm | Thursday 9.30am-5pm | Friday and Saturday 9.30am-12.30pm. Contact Sharon Ingram: littlemore.library@oxfordshire.gov.uk
- **Regular free events at the Library:**
 - **Reading Group for adults:** monthly: 1st Monday 2pm: to sign up, please speak to library staff
 - **Teen Time:** After school Club for teens: Mondays 3.30-4.30: Learn new skills, hobbies, craft, create & unwind.
 - **Stay & Play for Under 5s & their carers:** toys & refreshments are provided: weekly: Tues 2-4pm & Thurs 10am-4pm
 - **Friendly Friday Social event for adults:** refreshments, games, crafting, chat: weekly: Friday 10.30am-12.30pm: please speak to library staff to register interest
 - **Saturday Craft: for children & carers:** materials provided: weekly 9.30-12noon: just drop in
- **Littlemore Local History Society: LCC:** 7pm (refreshments) for 7.30pm, 3rd Wednesday most months (in the summer we go for local history walks): contact Buffy McClelland, history.littlemore@gmail.com, follow us www.facebook.com/groups or see littlemorelocalhistorysociety.wordpress.com
- **Meditation: Oxford Insight Meditation: VHL:** approx monthly meditation days at Littlemore Village Hall. Beginners, and those with experience of meditation practice are welcome. Upcoming day retreats: Sat 22 April with Mat Schencks, and Sat 20 May with Nathan Glyde. For more information & to book, see: www.oxfordinsightmeditation.org
- **Menopause support: ONLINE and in person:** with Nina Galley qualified nutritionist & coach. Understand more about your menopause journey and what steps you can take for a more easeful transition. Contact nina@nourishingspace.co.uk

- **Men's Breakfast: SM+SN:** 2nd Saturday of the month (except August) 9-10am. Join us for a Full English and time to talk! Suggested donation £5. Booking required, please email Julian Armitstead: churchwarden@littlemorechurch.org
- **Music: Community Orchestra: TOA:** Weds 7-9pm term times. New members always welcome - no auditions, we just play for fun! See www.cowleyorchestra.weebly.com
- **Music: Newman Concert Series at SM+SN:** occasional short Sundays at 6pm. Free with a suggested donation of up to £10: contact Eve McWilliam: admin@littlemorechurch.org or see www.littlemorechurch.org/concerts
- **Music: Jubilee Brass:** If you are a brass player and would like to come along to a friendly brass band, all players are welcome. We rehearse Monday/Friday evenings at Grace Church Cowley, OX4 2ES. Please contact Cliff Sadler: jubileebrassoxford@gmail.com for details
- **Music: Jubilate Band: SM+SN:** plays in the monthly Jubilate Church Service for SM+SN church: contact Malcolm Atkins malcolm.atkins@ntlworld.com or Rev Margreet Armitstead vicar@littlemorechurch.org
- **Music: Oxford Village Band: VHL:** Weds 8-9.30pm termly. For over 18s only: Traditional Folk Music in Harmony in the style of English village bands of Thomas Hardy's time. Suitable for most squeeze-box, woodwind, brass, fiddle, viola, cello & double bass players. Contact Dave Townsend: dtmellstock@aol.com or 01865 714 778
- **Music: Piano Lessons, & Music Theory: Littlemore:** tuition for students of any age or stage: Robin Hagues, 01865 770 894, robin@robinhagues.co.uk (enhanced DBS available for inspection)
- **Ozone Centre: Grenoble Road OX4 4XP**
 - **City Mazes:** Escape rooms for teens and adults + a new Virtual Reality experience! 01865 920 900, <https://citymazes.com/location-oxford>
 - **Gravitee Golf: Miniature golf course:** 01865 952 646, www.graviteegolf.com
 - **Hollywood Bowl,** Bowling Alley & entertainment centre: 0844 477 0493 www.hollywoodbowl.co.uk/oxford
 - **Laser Kombat,** Children's Amusement Centre: 01865 788 380 <https://laserkombat.co.uk/oxford>
 - **Partyman World Of Play,** Children's Amusement Centre: with dedicated sessions for those with special educational needs, and with autism (*see flyer p 10): 01865 788 380 www.partymanworld.co.uk/location/oxford.
 - **Vue Cinema Oxford:** Multiplex cinema with latest films: 0345 308 4620, www.myvue.com/cinema/oxford/whats-on
 - **Various eateries:** dine in and take-away: see www.thekassamstadium.com/the-kassam-leisure-complex
 - **Bray Associates Sunday Boot Fair:** <https://bray-markets.com/bray-markets-kassam-stadium-ox4-4xp-antiques-bric-a-brac-and-boot-fair>
- **Pilates: Littlemore & Iffley:** physiotherapy-led classes & individual sessions. Three class formats now offered: face to face, live online via Zoom & a pre-recorded class (available for repeat use). For more info see: www.clevermovement.co.uk. Contact Jane Callaway: janecallawaypilates@hotmail.co.uk
- **Pop-Up Pilates (Physiotherapist-led) at VHL: Weds at *5.30pm & at *6.30pm:** Online sessions also available: contact Lauren McLeod 07731 321 991, info@pop-up-pilates.com or see www.pop-up-pilates.com
- **Reading Group for adults: see Library**
- **Restore Shop & Café at Littlemore Hospital:** Open Monday - Friday, 10am - 2:30pm, pre-order to collect later. Contact Amy McCauley littlemorecoverygroup@restore.org.uk or 01865 902 098
- **Rhythmic Gymnastics Club:** for girls from the age of 4 years: **TOA:** *Tuesdays 5-6pm , 6-7pm | Fridays 5-6pm, 6-7pm | Saturday 9-10am, 10-11am: contact Zuzana Gergelova info@oxfordgymnastics.co.uk, www.oxfordgymnastics.co.uk
- **Rugby Training (Littlemore Rugby Club Senior): TOA: Northfield Close entrance: OX4 4NH.** Training: starts again in the autumn. Info is updated daily @ fb: [Littlemore RFC-Littlemore Rugby Club](https://www.facebook.com/LittlemoreRFC-LittlemoreRugbyClub), contact David Lammin: 07341 841 821, david.lammin87@outlook.com
- **Rugby Training Littlemore Rugby Club Mini & Junior: 5-14 yrs,** all abilities welcome): **TOA: Northfield Close entrance: OX4 4NH:** training: starts again in the autumn. Please contact John Perry 07766 954 922 or lrfcminichair@gmail.com for more information.
- **Scriptural Reasoning Group: SM&SN:** monthly, Mondays 7-8pm: for dates see: www.littlemorechurch.org/scriptural-reasoning.html. Meet people of other faiths and explore scriptures together. If you'd like to come please email oxford@dialoguesociety.org.
- **Singing: St Andrew's Church Choir: SAC:** We're always happy to accept new members. Choir Practice is 8pm Wednesday evening. Flexible levels of commitment are possible: contact Christian Bradley cwvbradley@gmail.com
- **Social Groups: see** Afternoon tea, Barberi Club, Coffee morning +sing-along, WI, the Library listings, and Drop-In.
- **Women's Institute: SVH:** meets at 7.30pm on 2nd Thursday in each month usually in Sandford Village Hall (August is a special social meeting). Contact: Jill Love 01865 716 557, jpappslove@hotmail.com, Carole Tasker 01865 748 300 or 07876 701 151, or caroletasker27@gmail.com, or message our Fb page Sandford-on-Thames Women's Institute.
- **Woodturners Club: at VHL:** Club nights are second Thursday each month except December (club AGM): 7pm start. Newcomers are very welcome, no matter what level of experience: entry is free for your first 2 sessions. Contact owc_secretary@yahoo.com for more information or see www.oxonwoodturners.com.
- **Yoga: Mama Flow Yoga:** with Sara Barker: Senior Yoga Teacher. Pregnancy, Post-natal & Baby Specialist.
 - **Baby Yoga & Post-natal Yoga: VHL:** Thurs 10.30am.
 - **Pregnancy Yoga: VHL:** Mondays at 7.30pm.
 For more info & to book see: <https://mamaflow.co.uk>. Concessions available for low income families.
- **Youth Groups:**
 - **Air Cadets, and Army Cadets: see under 'A' above**
 - **Beavers (age 6-8): Cubs (age 8-10½) and Scouts (age 10½-14):** see their individual websites for details.
 - **Brownies (girls 7-10 yrs):** see front page.

- **Explorers (age 14-18): SHQ:** Fridays, 7-8.30pm: see: www.oxfordspires.org.uk. Just turn up, or contact group leader Shane Clark shane@teemclark.org.uk or Camille Kalaja camille.scout.kalaja@gmail.com.
- **Youth Ambition:** Contact Paul Alcorn, Active Communities team: 07483 011 060 or palcorn@oxford.gov.uk
- **Youth Club: LCC:** Thursdays 4-6pm during school term times: free: open to young people aged 11-19. Come chill, have fun and enjoy activities, trips, games, cooking, gaming, arts & craft, music and so much more!
- **Youth Clubs: RHCC:** *Girls Group: Thursdays 5.30-7pm
*Boys Group: Wednesdays 5.30-7pm?
- **Boxing, Football & Multi-sports sessions** available at other centres
- **Aspiration: Career & Employment advice for 16-24 yrs-olds: free at RHCC:** *Tues 10-12noon CV Skills; *Tues 1-3pm Job Club; *Weds 10-4pm Employment drop in; *Thurs 10-12.30pm post employment training; *Thurs 1-3pm Well being courses.
- **Zumba: TOA:** Mondays 7-8pm. Instructor since 2011, my classes are high energy, good fun and burn over 500 calories! All ages (14+) and abilities welcome. Pre-booking required via: www.zumba-Steffi.co.uk or email me steffihaldance@gmail.com
- **Zumba: LCC:** *Mondays 6:30-7:30 pm Zumba & Toning (with weights) and Thursdays 6:30pm-7:30 pm Zumba. Suitable for all fitness levels. £6 per class (concession if attending multi classes in month). Contact: Pat Meade 07957 491 868 or patsimeade63@gmail.com

UKCF Action Holiday Stunt Camps

Book today online for Easter, Summer & Christmas camps in Stunts, Acrobatics, Aerial, Trampoline & Parkour

<http://www.ukcfacademy.co.uk>



UKCF Academy
Oxford's First Parkour Park
at The Oxford Academy, Littlemore

Freestyle Trampoline Walls | Parkour | Acrobatics | Aerial Classes
Oliver Ward / Director



LITTLEMORE ANGLING SOCIETY: FIXTURES

Our AGM will be at The George Littlemore on Sunday 26 March @1pm.

It's now the closed season for river fishing.

The river season opens June 16, and permits will be available from mid April.

Meanwhile there is some fishing on enclosed still waters and canals.

Date	Fixture	Competition	Venue	Draw : Fish Times
April				
30		Spring League	Buscot Park	D 8am : F 10-3
May				
21		Spring League	Green Farm	D 8am : F 10-3
June				
4		Spring League	Hunt's Corner Pond	D 8am : F 10-3
<i>Alan Cambell</i>				



LITTLEMORE RUGBY FOOTBALL CLUB

2022/3 FIXTURES

COUNTIES 4 TRIBUTE BERKS BUCKS & OXON NORTH

Next season starts September!

Keep up to date @ fb: Littlemore RFC-Littlemore Rugby Club

When the season starts, do come & watch home matches: meanwhile the clubhouse is still open at The Oxford Academy: (Northfield Close Entrance)

it has a fully licensed bar & live sports on our new big screen.

John Perry & David Lammin

Sandford-On-Thames Women's Institute: 2023/2024

Meetings are held in Sandford Village Hall at 7:30pm

on the **second Thursday of the month.**

You don't need to live here to join us!

13 April	Collate & display crafts for the Coronation & create theme for Summer Fête.
7 May	Bring Your Own Picnic in the Park: from 2pm on the Rec. Come alone & join us, or with family & friends.
11 May	Open to female non-members (£5 fee) Short presentation on Prescription Medicines: an opportunity to join research. <i>Pearls and Art Deco</i> : a talk by Frances Carlaw with an opportunity to buy pearl jewellery. Evening ends with our Coronation celebration.
8 June	Singalong Evening
? June	Saturday Needle-felting event tbc
13 July	Preparation for Summer Fair on 15 July
Aug	tbc
8 Sept	Scam Awareness: talk from Mandy Massam, Age UK
13 Oct	Planning, & Craft activities: theme <i>Christmas Trees</i>
10 Nov	Dementia talk: to be arranged
8 Dec	Christmas Celebration
11 Jan	Burn's Night Celebration
8 Feb	Hearing Dogs for the Deaf

Contact: me 01865 716 557, jpappslove@hotmail.com, or message fb: Sandford-on-Thames Women's Institute.

Jill Love

HALLS FOR HIRE

- **The Oxford Academy:** Beecroft Theatre, Bistro Hall, Events Rooms, Sports Hall, 3G Full size floodlit pitch, 3G Dome, Astro turf pitches, Grass pitches, Dance Studio, Fitness Suite, Drama studio and Classrooms: at TOA, Sandy Lane West, Littlemore, OX4 6JZ.

See: <https://toaleisure.schoolbookings.co.uk/>

Contact TOA Leisure: 01865 783 238 or toaleisure@theoxfordacademy.org

- **Littlemore Village Hall:** Hall with wifi, kitchen, stage & garden: at Railway Lane, Littlemore, OX4 4PY.

Now available to hire for organised classes, meetings, worship, and family gatherings.

See: www.littlemorevillagehall.org.

Contact: littlemorevillagehall@gmail.com

- **Royal British Legion Littlemore:** Functions rooms, Games room with snooker tables, darts boards and Bar:

at Lakefield Road, Littlemore, OX4 4LZ.

Contact Katie Tutty 01865 778 869 or littlemorerbl@gmail.com.

- **The Newman Meeting Place:** various flexible spaces including a kitchen able to cater for 100: suitable for meetings, conferences, exhibitions, groups, concerts etc:

at St Mary & St Nicholas Church, Sandford Road, nr OX4 4PB. See

www.littlemorechurch.org/venue-hire.html. Contact Julian Armitstead:

churchwarden@littlemorechurch.org

FAITH GROUPS

- **Blessed Dominic Barberi Roman Catholic Church, Cowley Road, OX4 4JX.** See: www.bldominicbarberioxford.org.uk
- **Coptic Church, Oxford:** meets at **VHL:** see www.facebook.com/CopticOrthodoxChurchOxford
- **Emmanuel Church: Littlemore Connect Group:** We meet weekly on Weds evenings at various locations in Littlemore, for Bible study, prayer, & fellowship. Everyone is welcome. Contact Ben Kelsey: benjaminkelsey@aol.com. For more @ Emmanuel Church see: www.emmanueloxford.org.
- **Littlemore Baptist Church:** Edith Kempson House, Chapel Lane, Littlemore, OX4 4QB: www.littlemorebaptist.org.uk. Sunday services: 10:30am-12noon. Contact: Andrew Bevan: andrew.bevan@littlemorebaptist.org.uk, 01865 514374 or 07799 532177
- **New Life Church:** Sunday services in Nepali, at **VHL:** see: www.nccuk.org/site/church/new-life-church
- **Rose Hill Methodist Church:** Rose Hill. OX4 4HS. Website <https://rosehillmethodists.org.uk>. Sunday worship is at 10.30am. Community Drop in for people of all ages: Mondays 2-4.30pm: contact Liz Spain, Community Chaplain: rosehillcommunitychaplain@gmail.com
- **St Mary and St Nicholas C of E Church, Sandford Road, near OX4 4PB:** website: www.littlemorechurch.org. Vicar: Rev Margreet Armitstead vicar@littlemorechurch.org. General enquiries: admin@littlemorechurch.org.

Find St Mary & St Nicholas regular events on the next page, and seasonal events events on front page.

Saturday 1st April 2023
2.30-4.30pm



all are welcome to
tea, cake, conversation:
it's also an opportunity to meet some of
your parish councillors

organised by Littlemore Village Hall Committee:
to join, or to help, please contact
c.drinkwater760@btinternet.com

FAMILY EASTER DISCO



EASTER SATURDAY 8 APRIL 2023 at 8pm.

Come on down to Littlemore Royal British Legion and dance along to great music provided by Dominic Disco.

A Raffle will be held, and prizes will be given for the best Boy and Girl under 12, and the best Adult Easter Bonnet.

Tickets, £3 per person are non-transferrable. For tickets, please contact Lorraine Whipp, or Katie Tutty at the Club.



DIDO & AENEAS

An entertainment by
Mr Henry Purcell.
Presented by

OXFORD YOUTH CHOIRS

DIDO Bonnie Tonya Hundley
AENEAS Daniel McShane

CONDUCTOR Amy Chang
DIRECTOR Margaret Lingas
CHOREOGRAPHER Lucia Boué

SATURDAY 29TH APRIL 4.00pm & 7.00pm

St Mary & St Nicholas Church, Littlemore, OX4 4PP
£10 suggested donation – card payments taken
free on-street parking nearby

REGULAR EVENTS AT ST MARY & ST NICHOLAS CHURCH

❖ THE WEEK at the Church

Mondays:

- Silent Prayer: 7am Zoom Meeting: ID: 891 8819 9518, Passcode: Prayer
- Coffee & Singalong: 10-12noon
- Scripture Reasoning: 7-8pm *monthly*: meet people of other faiths & explore scriptures together. To come please email oxford@dialoguesociety.org

Tuesdays

- Silent Prayer in the church at 8am
- Morning Prayer at 8.30am

Wednesdays

- Silent Prayer: 7am Zoom Meeting: ID: 891 8819 9518, Passcode: Prayer
- Church coffee morning for all, 10am-12noon

Thursdays

- Silent Prayer in the church at 8am
- Morning Prayer in the church at 8.30am
- Growing Minds stay & play group, 10-11.30am for Littlemore residents & their pre-school children. With a pre-school clothing swap. Food parcels are available if you'd like them.
- Littlemore Friendship Group, 2nd Thursday each month at 10am in church.

Fridays

- Silent Prayer: 7am: Zoom Meeting: ID: 891 8819 9518, Passcode: Prayer

Saturdays

- Men's Breakfast 9-10am: 2nd Saturday each month: a full English Breakfast & time to talk. Suggested donation is only £5: if you'd like to come please contact Julian Armitstead churchwarden@littlemorechurch.org.

Sundays

- Eucharist Service at 10am in church or Zoom (Meeting ID: 853 9014 0153, Passcode: Eucharist)

❖ ARTS EVENTS: see: <http://www.littlemorechurch.org/the-arts.html>

- **Sunday Concerts:** occasional Sundays at 6pm. Free: donation of up to £10.
- **Exhibitions:** We regularly hold exhibitions of local artists' work. If you would like to exhibit your work please contact churchwarden@littlemorechurch.org.
- **Jubilate Band:** this informal group plays in the monthly Jubilate Church Service: to join, contact Malcolm Atkins malcolm.atkins@ntlworld.com or Rev Margreet Armitstead vicar@littlemorechurch.org.

❖ BAPTISMS, WEDDINGS & FUNERALS

We are also available for Baptisms, Weddings & Funerals. Please contact Rev Margreet Armitstead vicar@littlemorechurch.org or phone 01865 748 003.

ABOUT THE 'WHAT'S ON' PAGES

The information in the previous 6 pages isn't a complete list of everything going on here. I do my best, but I need your help.

If you know of anything that is going on in Littlemore, which you think should be listed, please let me know at:
editor@littlemoreparishcouncil.gov.uk.

There is no charge, even for posters.

All I ask is that people confirm their info every two months.
I send a couple of reminders!

Saturday 6th May 2023
2.30-4.30pm



all are welcome to
tea, cake, conversation:
come & celebrate the coronation!

organised by Littlemore Village Hall Committee
to join, or to help, please contact
c.drinkwater760@btinternet.com.

Littlemore Rugby Club Family Fun Day

Food Stalls

Free Entry



Funfair
Rides

Live Music

August Bank Holiday Weekend
Sunday 27th 2023

PERRY
CONSTRUCTION

Andy
Glass
Windows

B&M Engineers Ltd
Steel Fabricators & Fabricators
Oxford

Hawtin Electrical
High Quality Affordable Electrical

TULU
Outdoor Furniture

Blanchford

Expert Scaffolding

shirtworks

Northfield Cl
OX44NH

THE INDIVIDUAL FUNERAL COMPANY

Littlemore RFC
f i s t

For updates about the Fun Day, check fb:
[Littlemore RFC-Littlemore Rugby Club](https://www.facebook.com/Littlemore RFC-Littlemore Rugby Club)

STOP PRESS

GET INVOLVED IN CITIZEN SCIENCE

Help reverse the serious decline in swift numbers.

Oxford Swift City Group is recruiting volunteers to survey swifts in Oxford City this summer.

Do your survey for just 1 hour twice a month during May, June and July.

Training will be provided, but here is a taster: <https://www.youtube.com/watch?v=bLqJJO-4Gk>.

Contact OxfordSwiftCity@rspb.org.uk if you're interested.



OTHER USEFUL CONTACT INFORMATION

ROSE HILL ADVICE CENTRE ...

... an independent charity,
grant-aided by Oxford City Council
& supported by Littlemore Parish Council.

We serve Rose Hill, Donnington & Littlemore, and offer free advice in confidence to all local residents looking for help sorting out benefits, debt, and housing issues.

Should the need arise, we will represent you in Courts of Law (for debt, rent arrears, eviction or mortgage repossession).

Find us: in the Rose Hill Community Centre, Carole's Way, off Ashhurst Way, Rose Hill, OX4 4HF

Drop in sessions:

Monday 9:30am-12:30pm | Tuesday 2pm-4pm | Wednesday 9:30am-12:30pm | Thursday 2pm-4pm

Appointment only sessions:

Monday 2pm-4pm | Tuesday 9:30am-12:30pm | Thursday 9:30am-12:30pm

You can also find us:

*online at rhdadvice.org

*email: admin@rhdadvice.org.

*freephone 0800 170 0156 or 01865 438 634

Monday to Thursday from 9.30am to 4.00pm.

Sarah Meziu, Manager



OUR LOCAL MP: Anneliese Dodds

- Address: Unit A Bishops Mews, Transport Way, OX4 6HD or House of Commons, London, SW1A 0AA.
- Email: anneliese.dodds.casework@parliament.uk.
- Telephone: 01865 595 790 (9am to 5pm Monday, Tuesday, Thursday & Friday).



NEIGHBOURHOOD POLICE

Rose Hill Community Centre,
Carole's Way, OX4 4HF

Now under the leadership of Sgt Rosie Campbell.

Contact the team:

- Ring 101 for non emergency calls, or 999 for emergencies
- email RosehillTeam@thamesvalley.police.uk.

Follow us on:

- Twitter – 'TVP Oxford' or
- Facebook – 'Thames Valley Police'
www.thamesvalleyalaert.co.uk



THE COMMUNITY EMERGENCY FOODBANK

www.cefoxford.co.uk

If your household is facing a shortage of essential, non-perishable food, you can ask to be referred to us:

please contact your doctor, one of the advice agencies, a community or housing worker, your children's school, a church minister, counsellor, or other professional person to refer you.

Following referral you will be able to collect a food parcel: its size will depend on your circumstances & household size. You may pick up your parcel within 2 weeks of your referral. Please bring identification for yourself & anyone you are collecting for.

- Monday & Wednesday 12 noon to 2 pm: Barton Neighbourhood Centre: Underhill Circus, OX3 9LS
- Tuesday & Friday 12 noon to 2 pm: St Francis Church, Hollow Way; Headington, OX3 7JF
- **Thursday 10 am to 11:30 am: Littlemore Baptist Church: Edith Kempson House, Chapel Lane, Littlemore, OX4 4QB**

If you would like to consider helping CEF as a volunteer please phone me: 01865 514374 or 07799 532177 or email

info@cefoxford.co.uk

Andrew Bevan



GENERAL PRACTICES

There are no Primary Medical or Dental services in Littlemore: the following GP surgeries cover Littlemore area:

Donnington Medical Partnership: 01865 771 313
1 Henley Ave, OX4 4DH

Cowley Road Medical Practice: 01865 791 850
Manzil Way, Cowley, OX4 1XD

Hollow Way Medical Centre: 01865 777 495
18 Ivy Close, Cowley, OX4 2NB

The Leys Health Centre: 01865 778 244
Dunnock Way, OX4 7EX

St Bartholomew's Medical Centre: 01865 242 334
Manzil Way, Cowley Rd, Cowley, OX4 1XB

Temple Cowley Health Centre: 01865 777 024
Temple Rd, Cowley, OX4 2HL



LITTLEMORE SCHOOLS

Emmanuel Christian School: www.ecschool.co.uk,
email: admin@ecschool.org.uk

John Henry Newman Academy: www.jhnacademy.co.uk

Mabel Prichard Secondary School: www.mabelprichard.org

The Oxford Academy: www.theoxfordacademy.org.uk

St John Fisher Catholic Primary School:
www.st-john-fisher.oxon.sch.uk

LOCAL PHARMACIES

Lloyds Pharmacy @ Sainsbury's: Heyford Hill Roundabout,
OX4 4XR: 01865 747 872

Rosehill Pharmacy: 1 Courtland Rd, OX4 4HZ: 01865 777836

CITY CENTRE

THINGS TO DO IN THE EASTER HOLIDAYS

and beyond.. suggested by the City Council

ADOPT A DRAGON

Selected Dates between 1st-16th April 2023 at 10:30am and 12:30pm

Venue: Oxford Castle and Prison

Tickets: £12 per child over 3: under 3s and accompanying adults go free

Join Dragon Masters at Oxford Castle & Prison for three interactive activities recommended for ages 3-11 years:

1. Paint and decorate your dragon egg
2. Construct your own nest for your dragon
3. Adopt your very own dragon to take home

Each child will take home their egg, nest and soft toy dragon along with a certificate of adoption and a fact sheet for them to fill in for their fiery friend.

This activity is perfect for children who love to be creative with arts and crafts – and who love dragons too.

FREE ACTIVITIES AT OXFORD CASTLE & PRISON

- 15th-16th April - Morris dancers in Castle Yard as part of Oxford Folk Festival
- 30th April - 3 Choirs singing in Castle Yard

For more information, please visit:

<https://www.oxfordcastleandprison.co.uk/events/event/adopt-a-dragon/>

THE WILD ESCAPE FREE FAMILY FUN DAY

Date: 3 April 11:00am to 3:00pm

Venue: The Museum of Oxford

Take part in free crafts and learn all about Oxford's wonderful natural world from local wildlife experts with a free family fun day.

(While all ages are welcome, children under 5 may need some help with their crafts!)

The Wild Escape is made possible by lead support from Arts Council England's National Lottery Project Grants, with additional support from Art Fund and a group of generous individuals and trusts.

For more information, please visit:

<https://museumofoxford.org/event/the-wild-escape-family-fun-day>

DINE 'N DEVOUR

Date: 7, 8 and 9 April

Venue: Broad Street

Dine N Devour, a brand-new touring food festival, will launch in Oxford city centre this Easter, with over 70 Food, drink and Artisan stalls to browse and buy.

Street entertainment will compliment this wonderful festival for the city. Expect to see hot and sizzling international street food vendors and plenty of drink choice, tasty treats to take home and artisan market traders.

For more information, please visit:

<https://lsdpromotions.com/oxford-1>

SHAKESPEARE'S BIRTHDAY PARADE

Oxford Preservation Trust (OPT)

Date: 21 April 11:00am to 12.30pm

Venue: Oxford Town Hall to Cornmarket

The Lord Mayor of Oxford will lead the way from Oxford Town Hall as the annual procession, which first took place in 1938, winds its way to the Painted Room on Cornmarket Street.

OPT looks after the Painted Room and its amazing Elizabethan wall paintings, all that remains of the 13th century Crown Tavern at 3 Cornmarket, where Shakespeare stayed on his annual trip from London to Stratford-Upon-Avon.

For more information, please visit:

<https://www.oxfordpreservation.org.uk/events/shakespeare-birthday-parade-saturday-21-april-1115am>

MAY MORNING

Date: 1 May from 6am

Venue: Magdalen College tower and other locations

The celebrations, which are more than 500 years old, start at 6am with Magdalen College choir singing from the college's Great Tower. Traditional events and activities, which include Morris Dancing and folk singing, take place across the city as the bell of the Great Tower rings out.



MIGHT YOU HELP?

The Parish Council needs new volunteers to help deliver the print issue of LITTLEMORE LOCAL to every home in Littlemore 6 times a year.

We especially need helpers from the new estates at Armstrong Road and St Nicholas Place.

Each round takes less than 2 hours.
Your copies would be dropped round to you.

Please contact Cllr Sue Stewart
sue.stewart@littlemoreparishcouncil.gov.uk
or email the editor
editor@littlemoreparishcouncil.gov.uk.

LANDLINE TELEPHONES : FORTHCOMING CHANGE

The technology that currently powers landline phones is going to be switched off, perhaps in 2025.

A big switch over

Landlines currently run on the **Public Switched Telephone Network (PSTN)**. Its old copper wires are being phased out in favour of newer technologies such as fibre optics. It is hoped that the old PSTN technology will be replaced by 2025 or 2026. The new system is called **Voice Over Internet Protocol (VoIP)**. Using VoIP your voice traffic will be routed via broadband, which allows for much greater clarity and security than with the old network.

What will I need to do?

If you already have a broadband contract, your provider will automatically switch your telephone to a VoIP connection when the exact switchover date is announced. It is possible you may need an adapter to plug your existing landline telephone into your broadband router, but this and other equipment you may need should be supplied by your phone company.

Will I need an internet connection to make landline calls?

Yes.

What if I don't have a broadband connection?

If you do not need to use high-speed internet services, Ofcom says you will be given the choice to buy a simple 'line only' broadband connection, which will effectively replace your current landline.

Will I keep my old number?

Yes.

Will I need to buy a new telephone?

No. You will need an adapter, or a new wall socket. These should be provided by your provider.

Will my new phone contract be more expensive?

It shouldn't be –though it is not guaranteed.

What if my Landline and Broadband providers are different companies?

You will have the choice to switch from one to the other once landlines are axed.

What about my Fax Machine, Alarm, or Emergency Call Pendant?

Some technologies such as Emergency Call Pendants, Credit Card Machines, Fax Machines and some Alarm systems that rely on existing technologies will need adapting to the new VoIP technology. You will need to speak to your phone provider before the switchover to see if they can aid you in the transition. In most cases there should be adapters available to help you, however it would be wise to check ahead to see what you will need to do.



What will happen during power cuts?

If there is a power cut with VoIP, you will not be able to make or receive calls using VoIP. With the old PSTN system, if there were a power cut at your home your telephone line would still work.

Backups and alternatives

It is recommended that you have a backup method of making and receiving calls such as a mobile phone ideally with 4G or 5G

internet access. That way if the power drops on your home broadband, then you would still be able to make and receive landline calls via an app on your mobile phone.

It is also possible to invest in a small **Uninterruptable Power Supply (UPS)** or Battery Backup system, that will keep your communications up in cases of power outages. There are business- and domestic-sized units on the market.

Are Business-grade ISDN lines being discontinued?

Yes, both ISDN 2 and ISDN30 lines are also being replaced by VoIP. You will need to speak to your provider to discuss your options if you are using business grade ISDN.

Will VoIP Calls affect my broadband speed?

For home, and most small business users VoIP calls shouldn't take up the sorts of bandwidth that will affect your broadband speeds.

Can I have two Broadband connections, one for calls and one for data?

Yes. This is common and if you're a business who relies on telephones and connection to the internet, then it is sensible to have more than one broadband connection.

Where can I keep up to date about this?

Some of the finer details of the switchover are still being released.

The following website will be updated with more news as things evolve, but you can also contact your existing provider.

- <https://www.pmctelecom.co.uk/blog/are-landline-phones-being-phased-out-in-2025/>

Ofcom and Openreach have excellent information pages regarding the landline switch off in 2025.

OfCom info page:

- <https://www.ofcom.org.uk/phones-telecoms-and-internet/advice-for-consumers/future-of-landline-calls>

Openreach info page

- <https://www.openreach.co.uk/cportal/products/the-all-ip-programme/wlr-withdrawal>

SURPRISING STATISTICS

- Oxfordshire households, on average, **waste £720** worth of food every year.
- Even though we have a food waste recycling service, on average, **28% of the waste in green rubbish bins in Oxford is made up of food waste.**
- On average, households in the UK throw away **4.5 million tonnes** of edible food every year - that's 8 meals a week
- **25% of the food waste** is due to buying, cooking, preparing or serving too much food.
- the top wasted foods are bread, potatoes and milk.

FOOD STORAGE: THREE TOP TIPS

1) Know the difference between best before & use-by date

- **Use-by date** is about food safety, and is the date up until which a food may be used safely (e.g. consumed, cooked, and processed). You can cook and eat the food up until midnight on the date, or cool it and store it in the fridge. Eat it within 48 hours, or freeze it to eat later.
- **Best before** is about quality, after the date it'll still be safe to eat but the food just might not be at its best.

2) Know the best place to store things after your shop

The best way to store the top 3 wasted foods:

- **Bread:** Keep bread and rolls in a fairly cool, dark and dry place, like a bread bin or cupboard and in their original packaging. You can also freeze bread in a sealed bag or container for up to 3 months
- **Potatoes:** Store potatoes in the fridge to keep them fresher for longer. Leftover cooked potatoes can be frozen for up to 3 months, even mash! Or stored in an airtight container in the fridge for up to 2 days
- **Milk:** Store milk in the fridge, or freeze it for up to a month.

3) Know how to store your leftovers

Make sure you cool your leftovers quickly, then cover them before you store them. If you're storing them in the fridge make sure it's below 5°C. If you put your leftovers in the freezer, label them and include a date, so as to avoid finding Unidentified Frozen Objects.

KNOW TO REHEAT YOUR LEFTOVERS

Leftovers stored in the fridge should be eaten within two days, rice dishes within 24 hours. Leftovers stored in the freezer must be defrosted before being reheated. The best way to defrost leftovers is by leaving them to thaw in the fridge. Any food that has been defrosted needs to be consumed within 24 hours. When you come to eat, make sure to reheat it the food is piping hot.

LEFTOVER RECIPES

Get ideas about what to do with leftovers including potatoes, chicken, pork, and rice at <https://www.bbcgoodfood.com/recipes/collection/leftovers-recipes>

INEVITABLE FOOD WASTE

Sometimes you can't avoid food waste. Meat or fish bones, coffee-grounds, teabags and egg shells have to go somewhere. You can compost them all, or put them in a free ODS food caddy.

RECYCLING YOUR FOOD WASTE

- **Composting:** If you'd like to produce your own compost from your food waste, find discounted compost bins at <https://getcomposting.com>.
- **ODS food collection caddies:** If you don't have one, get a food caddy today.
Thirty Litre food caddies can be picked up from ODS Cowley Marsh Depot. Residents of flats can order a red bin. Cowley Marsh Depot, Marsh Road, OX4 2HH
Telephone: 01865 249 811
Email: recyclingandwaste@odsgroup.co.uk
See: www.oxford.gov.uk/info/20004/recycling_and_waste/548/new_bin_requests

WHAT CAN GO IN A FOOD CADDY?

See: https://www.oxford.gov.uk/info/20294/what_goes_in_each_bin/39/what_goes_in_the_food_waste_caddy

YES PLEASE

- Bread and pastries
- Dairy products (e.g. cheese)
- Fish (including bones and scales)
- Fruit and vegetables (including fruit stones)
- Meat and bones (cooked or uncooked)
- Cooking oils and fats (e.g. vegetable oil, olive oil, coconut oil, butter, lard): Please collect (cooled) oils and fats in a plastic bottle and place **inside** your food caddy or red bin
- Tea bags and coffee grounds
- Cooked and raw food

NO THANK YOU

- Compostable cups and packaging (use green rubbish bin)
- 'Vegware' packaging (use green rubbish bin)
- Glass
- Non-food products
- Packaging

SHOULD I LINE MY FOOD CADDY?

Lining the food caddy is optional

- Plastic carrier bags
- Compostable bags
- Supermarket carrier bags (including bags for life)
- Pedal bin liners (but not black bags)
- Other plastic bags (e.g. bread bags and salad bags)
- Newspaper
- Black bags
- Crisp packets
- Cloth bags.

WHAT HAPPENS TO FOOD WASTE COLLECTED BY ODS?

It goes to an anaerobic digester in Cassington. The food is mashed and water is added to turn it into a food soup which is heated to 70°C and stirred for 85 days. Bacteria digest the food soup and produce methane. This is burnt, and this drives a turbine to generate electricity for 4,800 homes. The leftover food is sold to farmers as a nutrient-rich fertiliser for crops.



LITTLEMORE PARISH COUNCIL

2022-23 Council Chair: Cllr Maggie Willis

MEMBERS and their preferred contact details

Cllr Susie Aldridge: susie.aldridge@littlemoreparishcouncil.gov.uk

Cllr Tiago Corais: cllrtcorais@oxford.gov.uk

Cllr Michael Evans: michael.evans@littlemoreparishcouncil.gov.uk, 0771 3842877

Cllr Dorian Hancock: dorian.hancock@littlemoreparishcouncil.gov.uk

Cllr Joyce Milligan: joyce.milligan@littlemoreparishcouncil.gov.uk

Cllr Sadiea Mustafa-Awan: s.m.awan@littlemoreparishcouncil.gov.uk

Cllr Janice Pullen: jan.pullen@littlemoreparishcouncil.gov.uk

Cllr Anna Railton: anna.railton@littlemoreparishcouncil.gov.uk

Cllr Chris Smowton: chris.smowton@littlemoreparishcouncil.gov.uk

Cllr Anne Stares: anne.stares@littlemoreparishcouncil.gov.uk

Cllr Sue Stewart: sue.stewart@littlemoreparishcouncil.gov.uk, 01865 711332

Cllr Maggie Willis: maggie.willis@littlemoreparishcouncil.gov.uk

There are 16 seats: the seats are distributed: Littlemore ward (13 seats), Bodley Road ward (2 seats), Sandy Lane West ward (1 seat).

11 of the 12 Councillors now in post serve Littlemore ward, Cllr Evans represents Sandy Lane West ward.

There are 4 vacancies: 2 for Littlemore ward, and 2 for Bodley ward

COMMITTEES

Finance & General Purposes Committee

Chair: Sue Stewart

Members

Susie Aldridge

Tiago Corais

Dorian Hancock

Sadiea Mustafa-Awan

Maggie Willis

Planning Committee

Chair: Jan Pullen

Members

Sadiea Mustafa-Awan

Sue Stewart

Maggie Willis

Personnel Committee

Chair: Maggie Willis

Members

Susie Aldridge

Sadiea Mustafa-Awan

WORKING GROUPS

KEY: (L) = Lead (the lead writes reports to Full Council) (C) = Chair (P) = public member, who is not a parish councillor.

Community Engagement, Climate & Biodiversity

Susie Aldridge

Tiago Corais

Judith Godsland (P)

Sadiea Mustafa-Awan

Jan Pullen (L)

Anna Railton

Sue Stewart

Maggie Willis

Neighbourhood Plan

Jan Pullen (L)

Tony Eaude (C) (P)

Anna Railton

+ additional local

resident members

Small Grants

Susie Aldridge

Sadiea Mustafa-Awan

Maggie Willis (L)

Transport & Connectivity

Tiago Corais (L)

Dorian Hancock

Sadiea Mustafa-Awan

Maggie Willis

Estates & Maintenance

Michael Evans

Dorian Hancock

Joyce Milligan

Sadiea Mustafa-Awan

Anne Stares

Maggie Willis (L)

IT

Jan Pullen

Anna Railton (L)

CONTACT DETAILS FOR FULL COUNCIL

Clerk: Post Vacant: a new Clerk has been appointed but is yet to take up his post.

Meanwhile, you can still write to the Parish Council:

by letter to Littlemore Parish Council, c/o Sandford Lodge, 24 Lawn Upton Close, Littlemore, Oxford, OX4 4QF,

or via the Clerk's email address: clerk@littlemoreparishcouncil.gov.uk.

The email address is active, and your email will be answered.

Responsible Financial Officer: Geoffrey Ferres

FULL COUNCIL MEETINGS

Full Council Meetings are held at Littlemore Village Hall, Railway Lane, OX4 4PY,

from 7-9pm on the 2nd Tuesday each month except August.

If you wish to attend, please contact Full Council in advance. For news about the meetings, and for minutes of meetings, please check the Parish Council website: www.littlemoreparishcouncil.gov.uk.



WELCOME TO NEW PARISH COUNCILLORS

Joyce Milligan

I have lived in Littlemore since 1991. When I first retired from working life I felt I had more to offer so I took a job as a College Reception/Porter. I'm now fully retired: I want something completely different, and to give something back to community as a parish councillor. In the past I've done voluntary work at Blackbird Leys Welfare Rights office, an Access Course, and a university degree in Business & Tourism. During my working life I was an HR professional with Membership of the Chartered Institute of Personnel & Development.



Chris Smowton

I live in Littlemore and was part of the Littlemore Neighbourhood Plan working group in 2019. I am looking forward to working with the group again, developing infrastructure and environmental improvements that will really help the parish stand out. I am a City Councillor for Headington Ward, and am currently leader of the opposition Liberal Democrat group. At City Council level, I take an interest in planning matters: this includes scrutinising the development of the City's Local Plan. When I'm not in one form of council meeting or another, I enjoy running, kayaking, and watching stand-up comedy.



WHAT DO PARISH COUNCILLORS DO?

They ...

- Represent the views of residents of Littlemore Civil Parish
- Deliver services such as maintaining green spaces and Littlemore Local newsletter
- Decide on how much to raise through the Parish precept to deliver these services
- Comment on planning applications to Oxford City Council
- Influence and shape the long-term policies for the Parish
- Bring about improvements through local projects
- Lobby other service providers
- Work in partnership with other agencies.

This year the Parish Council has ...

- Re-started work to develop a Littlemore Neighbourhood Plan
- Installed real time information boards at three bus stops
- Installed noticeboards in the Sandford Road bus shelter
- Installed two speed indicator devices on Sandy Lane West
- Designed and delivered a community map
- Planted a beech tree in Little Park
- Engaged children in hedge planting in Little Park
- Awarded grants of £500 to four local organisations
- Reduced the Parish Council element of Council Tax by 16.1%
- Continued to maintain Oxford Road and Herschel Crescent Recreation Fields, The Green and Little Park
- Delivered free cycle training for children in partnership with Active Oxfordshire
- Participated in an Ox-Clean Litter Pick event in partnership with Oxford Civic Society.

UPDATE: Littlemore Neighbourhood Plan

A Neighbourhood Plan needs to comply with the approved Local Plan, but having one can help us to achieve Community projects for Littlemore. Work on preparing the Littlemore Neighbourhood Plan is progressing. The NP Steering Group is planning various events through which we might gather your views. In the summer of 2023, and will publicise them in LITTLEMORE LOCAL, and elsewhere. They will be a chance for you to tell us how to maintain what is good about living in Littlemore, and improve it for future years. Please join in wherever and however you can. If you would like to know more, and are interested in being part of working groups to contribute to policies for the Plan, or feel that you have particular skills and/or time to offer, please contact Jan Pullen on jan.pullen@littlemoreparishcouncil.gov.uk. Cllr Jan Pullen

COMMENT FROM OUR RESPONSIBLE FINANCIAL OFFICER

By now, readers will have received their Council Tax bills for next year and you will have seen that the parish council has kept its word. A couple of issues ago we told you we would look to cut the parish council element of your Council Tax by at least 12.5% and, in the end, we felt able to cut it by 16.1%. And the Council is confident we will be able to keep our promise that there will be no increase in 2024-25.

In fact, the current Council believes you won't be asked to pay as much as you were this year for at least another 5 years.

Wishful thinking? No, it's the measure of how much the present Council, that took over in 2021, believes you were overcharged by the previous Council.

Don't worry: you should see the parks kept to at least the standard you're used to, and we can use money from developers to pay for lots of good things for the community – most recently, the new beech tree in Little Park.

Geoffrey Ferres

OTHER NEWS

We've appointed a new Clerk, Morgan James, but he is yet to take up his post. We hope to offer him a welcome soon.

THE ANNUAL PARISH MEETING..

You are invited to the Annual Parish Meeting which will take place in the Village Hall, at 7pm on May 23. The agenda will be available on the Parish Council website and noticeboards nearer the date.

Cllr Maggie Willis

THE ANNUAL LITTER PICK

Around 80 people turned up to the litter pick organised by the Parish Council in partnership with Oxford Civic Society. This is probably the best-ever turn out. We met at the Community Centre, picked Littlemore clean of litter, and finished at the Village Hall, which we picked clean of cake! Thank you to all who collected litter, to TVP for the group photo, and to the Village Hall Trustees for providing Tea & Cake.

Cllr Anna Railton



The copy deadline for the June / July issue is midnight on Thursday May 11. Please email

editor@littlemoreparishcouncil.gov.uk to submit copy, to get a deadline reminder, or to receive LL by email.